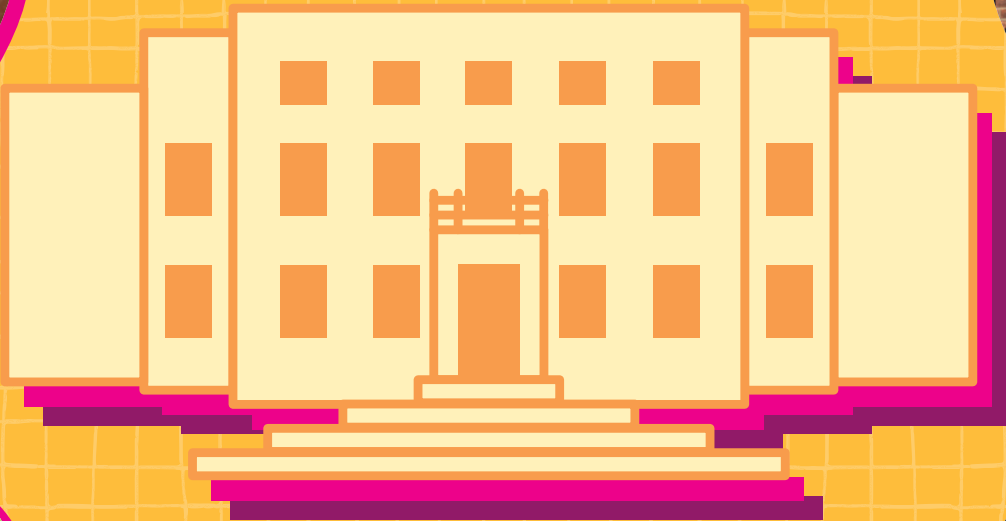
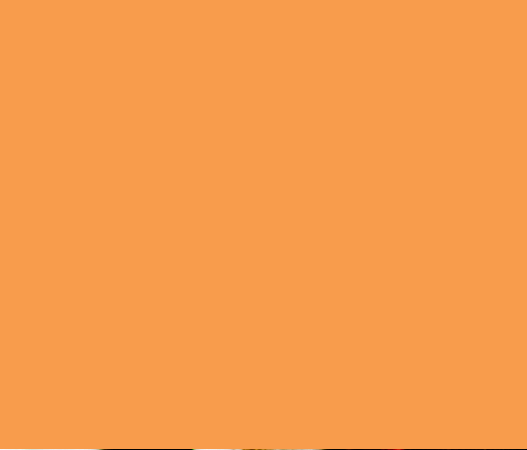
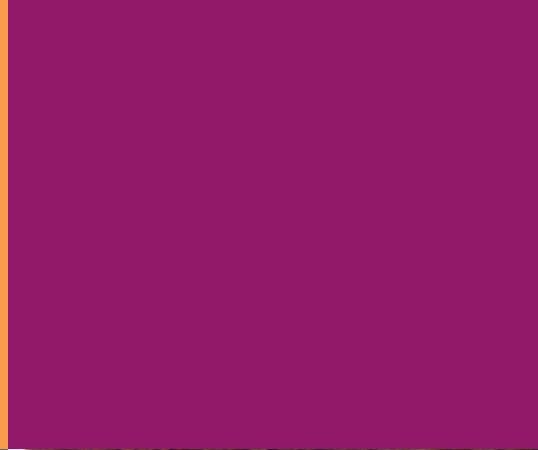
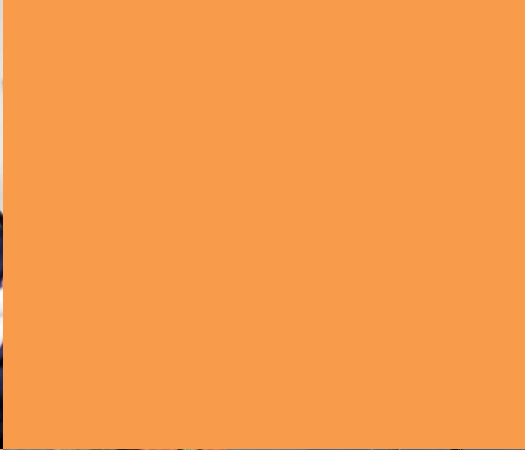


# Leeds University Union

Our impact on students' time at Leeds in 2024









# Love your time at Leeds

This report is a little snapshot of what LUU has done in the second year of our 2022 – 2026 strategy. It's a celebration of the amazing things that can happen in the face of great challenges, of the vibrancy and commitment of our student community, and of the partnerships and people that make things happen.

We faced many challenges together. We experienced first-hand how world conflict impacts our community, and we have also seen the cost of living rise. When we formed our strategy we spoke to thousands of students to design something that met their priorities. They told us they needed LUU's help to learn new skills, feel safe and well, and succeed – academically and in their future careers. They also want to feel part of a dynamic, lively and connected community. And we're starting to see the impact of our strategy.

So, we have a clear, simple mission: **together, we'll make sure you love your time at Leeds.**

Here's a taste of what you can expect from LUU



# We have three priorities: Fuelling your passions

**Whatever students want to do, we want to help them achieve it.**

We're here for students to help them find their people, fire their passion, make a difference in the world, learn new skills and achieve their potential.

## In numbers:

AMOUNT PAID TO STUDENTS  
THROUGH LUU AND JOBLINK WORK



Almost £3 million



320+

NUMBER OF ACADEMIC REPS  
REPRESENTING STUDENT INTERESTS

3,630

STUDENTS SERVED BY ESSENTIALS  
- ACCESSING BASIC NEEDS AND  
FINANCIAL SUPPORT

FREE EXAM BREAKFASTS GIVEN  
TO STUDENTS

3,206



# Inspiring you to be your best self

**We want to help every student to shine.**

Students told us that mental health and wellbeing is a top priority and we will help everyone feel good, celebrate their individuality and be safe.

## In numbers:

STUDENTS PARTICIPATING  
IN PHYSICALLY ACTIVE CLUBS  
(SPORTS, DANCE, MARTIAL  
ARTS AND OUTDOORS)

17,849

4,206

STUDENTS ATTENDING  
TRIPS

ATTENDANCE AT  
LUU EVENTS

103,605

+10,900

STUDENTS BROUGHT HOME  
SAFELY BY OUR NIGHT BUS



# Creating a celebrated, fun and lively community you can be part of

**Time in Leeds is life changing.**

We're part of a diverse community of over 39,000 students, in one of the UK's best cities, and we want to make sure students have a range of opportunities to build connections and communities. All the hard work of our student communities, LUU staff and University of Leeds partners have helped us achieve enormous impact this year.

## In numbers:

TOTAL NUMBER OF CLUB  
AND SOCIETY MEMBERSHIPS

37,231

4.2/5

CUSTOMER EXPERIENCE RATING  
OF LUU'S SERVICES

NUMBER OF STUDENT  
VOLUNTEERS SUPPORTED BY LUU

+5,600

14,614

TOTAL ATTENDANCE FOR  
'GIVE IT A GO' SESSIONS



# Key wins this year

## Achieving Excellence

- ★ LUU was National Winner in the Best Bar None Awards.
- ★ We retained our Green Impact Award at Excellent level for the sixth year running.
- ★ We were finalists in the Green Gown Awards which celebrate sustainability in the HE Sector.
- ★ LSR won 'Student Radio of the Year' for the second year in a row at the Student Radio Awards.
- ★ LSTV won 10+ awards, including silver for 'Broadcaster of the Year' at the National Student TV Awards.
- ★ LUU ranked in the 'Top 100 Inclusive Workplaces' by the National Centre for Diversity.

## New Spaces

- ★ We launched Essentials, our community space, student pantry and hub for financial support.
- ★ We opened the PGR Lounge, a space to suit the diverse needs of our postgraduate research students.
- ★ We debuted Crossroads, a new space where students can meet others and take part in all types of games - from chess to Mario Kart!

## Student Engagement and Expertise

- ★ During the year we published over 35 insight reports to continue to develop our expertise on students around everything from earning while learning, student safety, the Russell Groups Student Unions Student Manifesto (which was presented at the House of Lords).
- ★ We had the highest UK SU voter turnout in our election with nearly 10,000 individual voters engaging with LeadLUU.
- ★ Introduced the new Faculty Rep role in partnership with the University, creating a higher level of student representation into student voice.



# Coming soon

We are really excited to announce three new initiatives that will serve our student community in 2025:

## ★ Liberation Hub:

We will soon be launching the Liberation Hub, a dedicated space for our students to celebrate their diversity.

## ★ Student Safety:

In 2025 we will launch a host of new work supporting student safety, including development of an accreditation for our Clubs and Societies to support students after sexual assault.

## ★ Gryphons Get Active

A programme of work to help students get physically active - focused on supporting women, people of colour and postgraduates.





# Thank you

LUU is your Students' Union, here to make sure every student at the University of Leeds has the best experience possible. We do this by putting student voice at the heart of every decision, by providing the services you've told us you need, and providing spaces for you to study, socialise and relax. You have access to opportunities to feel celebrated, empowered and supported, with cultural and liberation campaigns, feedback and discussion forums, and student-led projects.

There is independent and confidential advice available at the LUU Help & Support team, and plenty of part-time jobs to pick up some skills for your CV at our shops, cafes, events, and offices. As a student, you play a big part in making this happen. Whether it's through joining a club or society, voting for your student leaders, buying something from our bars, cafes or outlets (every penny you spend comes back into providing student services!), or taking part in anything at LUU – you make our student community the vibrant, exciting hub that it is.

Join our story.



